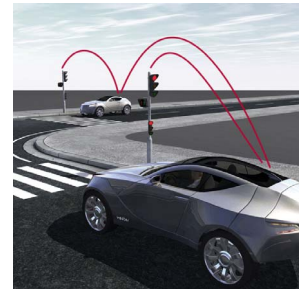


Reliable Analysis and Testing of Car2x Functions with CANoe.Car2x

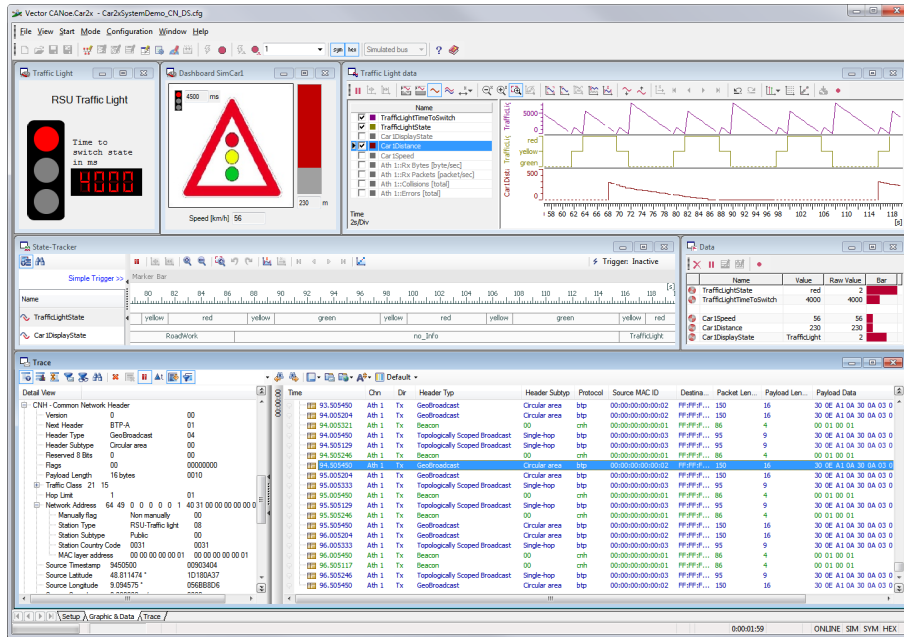
Stuttgart, Germany, 03-08-2011 – In the new Option .Car2x, Vector is extending its CANoe and CANalyzer tools with additional functions for developing, analyzing and testing the communication between vehicles or between vehicle and infrastructure. The tools support wireless communication per the IEEE 802.11p (pWLAN) standard. They enable direct evaluation of both the Car2x-specific application protocols and the application messages placed on them such as the Cooperative Awareness Message (CAM) and Decentralized Environmental Notification Message (DENM).



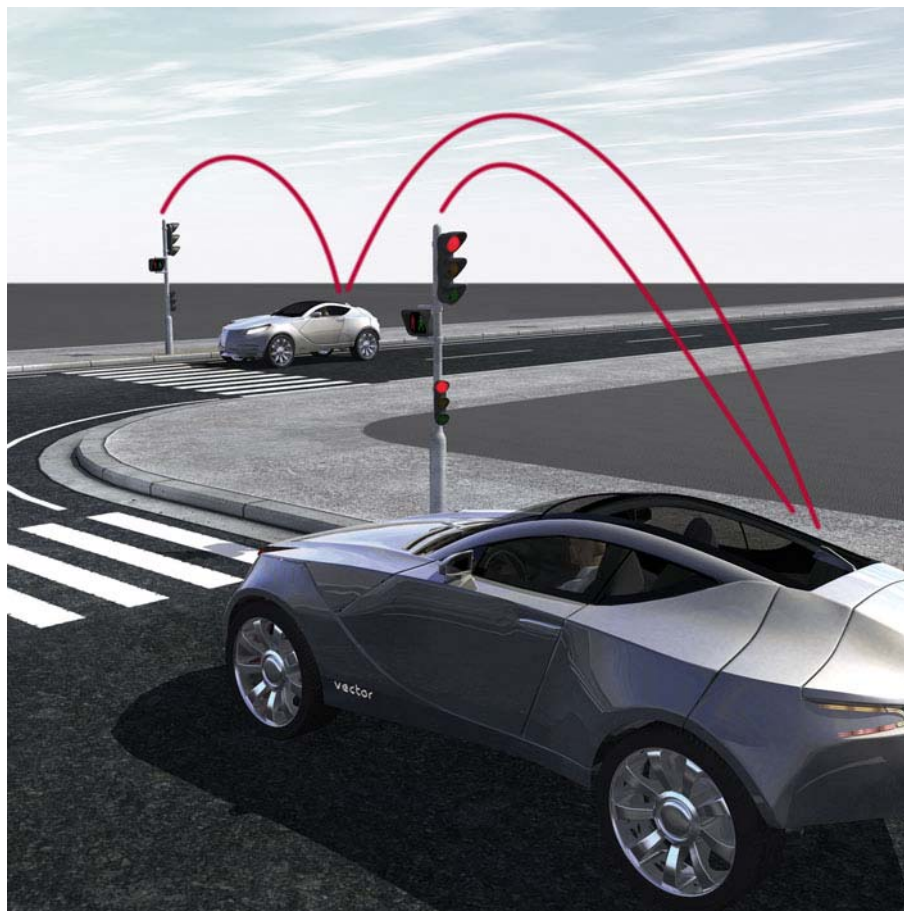
As a multibus tool, CANoe/CANalyzer places inter-vehicle communication in time-based relationship with electronic vehicle networks such as CAN, LIN, FlexRay and MOST. This is an important prerequisite for the development of driver assistance functions based on Car2x data.

To stimulate individual pWLAN packets, there is the WLAN Packet Builder with an intuitive user interface; it makes it easy to create and send correct as well as corrupted pWLAN packets for test purposes. For more complex simulations of traffic scenarios with vehicles (ITS Vehicle Stations) and infrastructure (ITS Roadside Station), the Car2x developer can utilize specific function libraries provided in CAPL. An existing radio adapter may be used as the WLAN interface hardware for communication between vehicles or between vehicle and infrastructure. It can be used together with the vehicle application or exclusively as a measurement interface. The connection to CANoe/CANalyzer.Car2x is made flexibly via an open interface.

For more information on the Internet: www.vector.com/car2x_en



[Figure 1: CANoe.Car2x simulates Car2x traffic light scenarios with ITS Vehicle and ITS Roadside Stations. The ECUs/networks are analyzed in the Trace Window.]



[Figure 2: Reliable analysis and testing of Car2x functions with CANoe.Car2x.]

Revised 8/2011
Word count: 230
Character count: 1,626

Vector Informatik GmbH
Ingersheimer Str. 24
70499 Stuttgart
Germany
www.vector.com

You can also find this and other press releases on our website at:
www.vector.com/press

We would appreciate a print copy of the published material.
If you have any questions before publication please feel free to contact us.

Editorial contact persons:

Vector Informatik, Germany (Article available in English and German)
Ms. Heike Tippenhauer,
Tel. +49 711 80670-5203, Fax. +49 711 80670-585203,
E-mail: heike.tippenhauer@vector.com

Vector CANtech, North America (Article available in English)
Ms. Angela Ferrero,
Tel. +1 248 504 6447, Fax. +1 248 449 9704,
E-mail: angela.ferrero@vector.com

Vector GB Ltd., Great Britain (Article available in English)
Mr. Uwe Gerlinger,
Tel. +44 121 50681 51, Fax. +44 121 50681 69
E-mail: uwe.gerlinger@vector.com

Vector France (Article available in French)
Ms. Françoise Dessertine,
Tel. +33 1 4 231 4000, Fax. +33 1 4 231 4009,
E-mail: francoise.dessertine@vector.com

Vector Scandinavia, Sweden (Article available in Swedish)
Mr. Henrik Pihlgren,
Tel. +46 31 764 76 10, Fax. +46 31 764 76 19,
E-mail: henrik.pihlgren@vector.com

Vector Japan (Article available in Japanese)
Mr. Shinsuke Yokoyama
Tel. +81 3 5769 7825, Fax. +81 3 5898 6975,
E-mail: shinsuke.yokoyama@vector.com

Vector Korea (Article available in Korean)
Mr. Ronald Yang,
Tel. +82 2 2028 0602, Fax. +82 10 4109 2029
E-mail: ronald.yang@vector.com

Vector China (Article available in Chinese)
Ms. Vivian Chen
Tel. +86 21 6432 5353 102, Fax. +86 21 6432 5308
E-mail: vivian.chen@vector.com

About Vector Group (Revised: August 1, 2011):

Vector is the leading manufacturer of software tools and software components for networking of electronic systems based on CAN, LIN, FlexRay, Ethernet and MOST as well as multiple CAN based protocols. The Vector know-how is reflected in a wide range of tools as well as in integrated consulting services with software and systems engineering. Workshops and seminars complete the manifold training program. Customers from the automotive engineering, the commercial vehicle, aerospace, transportation and control technologies around the world trust in the solutions and products from the independently-owned Vector Group.

Vector Informatik GmbH was founded in 1988. About 990 employees work for Vector Informatik and Vector Consulting Services in Stuttgart or in one of the subsidiaries in USA, Japan, France, Great Britain, Sweden, the Republic of Korea, India and China. The group's revenue in 2010 was 155 million Euros.