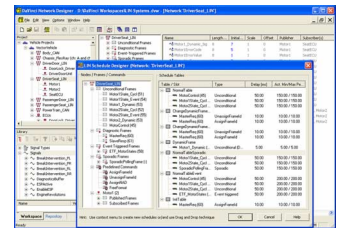


## Comfortable Design of LIN Architectures and Subsystems

### DaVinci Network Designer LIN



Stuttgart, 01-30-2007 – Vector's DaVinci Network Designer LIN gives automotive OEMs and system suppliers a user-friendly tool for designing individual LIN buses, independent LIN subsystems and complex network structures. The tool enhances productivity compared to text-based LDF editors and other tools due to its application-oriented display and editing of data. Knowledge of the LDF syntax is not necessary.

Network designers and developers of LIN subsystems define the hardware topology and communication of LIN buses by using an intuitive graphical user interface. It is possible to simultaneously design a number of LIN buses that are interconnected via a multi-master node. Together with the DaVinci Network Designer CAN, all CAN-LIN communication including gateways, is defined in one design environment.

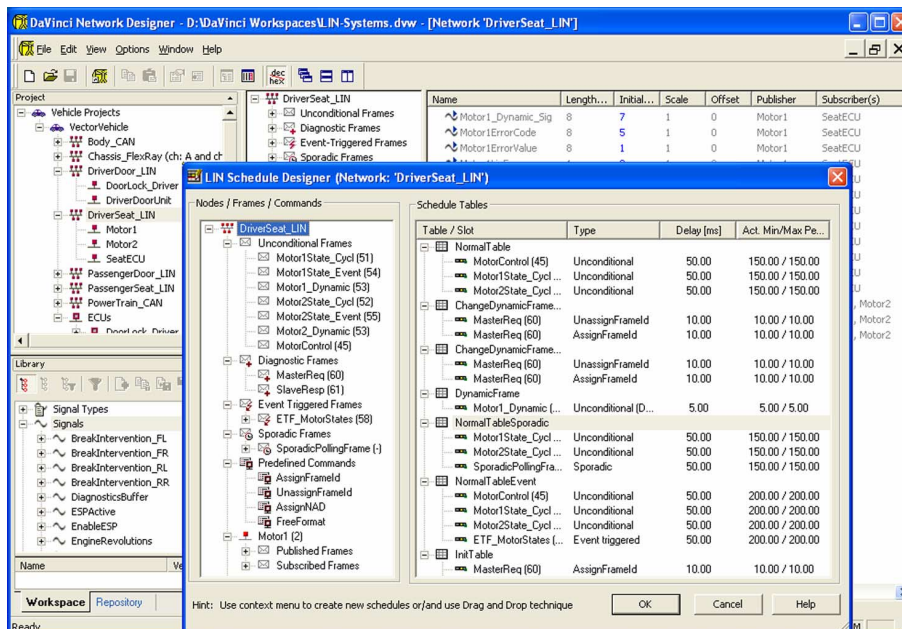
All types of LIN frames may be used for communication between the LIN nodes. The user creates the LIN Schedule Tables either interactively with a graphic editor or automated by using a wizard. Schedule changes or modifications to the LIN communications are possible at any time during network development. Besides the LIN standards 1.1 to 2.0, the tool offered by Vector also supports the new SAE J2602 standard.

## Press Release

In order to assure design conformance to the LIN and J2602 specifications, detailed consistency tests can already be performed during the design process. Other functions such as visualization of gateway routings between LIN and CAN networks and definition of reconfiguration commands complete the list of features.

Communication data is imported and exported via the standardized exchange formats LDF and FIBEX. This means that the tool fits seamlessly in Vector's LIN tool environment and those of third-party suppliers. DaVinci Network Designer LIN is already successfully used in production-level projects at OEMs.

You will find additional information on the Internet at: [www.vector-informatik.com/davinci\\_networkdesigner\\_en](http://www.vector-informatik.com/davinci_networkdesigner_en)



[Figure: DaVinci Network Designer LIN with LIN Schedule Designer]

Revised: 01/2007

Word count: 295

Character count: 2,031

Vector Informatik GmbH  
Ingersheimer Str. 24  
70499 Stuttgart  
Germany  
[www.vector-informatik.com](http://www.vector-informatik.com)

We would appreciate it if you would send us a specimen copy.  
If you have any questions before publication we would be glad to assist you:

Vector Informatik, Germany (Article available in English and German)  
Holger Heit,  
Tel. +49 711 80670-567, Fax. +49 711 80670-555,  
E-mail: [holger.heit@vector-informatik.de](mailto:holger.heit@vector-informatik.de)

Vector CANtech, North America (Article available in English)  
Jim Hutter,  
Tel. +1 248 449 9290, Fax. +1 248 449 9290,  
E-mail: [jim.hutter@vector-cantech.com](mailto:jim.hutter@vector-cantech.com)

Vector France (Article available in French)  
Françoise Grandjean,  
Tel. +33 1 4 231 4000, Fax. +33 1 4 231 4009,  
E-mail: [francoise.grandjean@vector-france.com](mailto:francoise.grandjean@vector-france.com)

Vector Scandinavia, Sweden (Article available in Swedish)  
Henrik Pihlgren,  
Tel. +46 31 764 76 10, Fax. +46 31 764 76 19,  
E-mail: [henrik.pihlgren@vecscan.com](mailto:henrik.pihlgren@vecscan.com)

Vector Japan (Article available in Japanese)  
Takushi Hieda,  
Tel. +81 3 5769 6981, Fax. +81 3 5769 6975,  
E-mail: [takushi.hieda@vector-japan.co.jp](mailto:takushi.hieda@vector-japan.co.jp)

You can find this and other press releases on our homepage at:  
[www.vector-informatik.com/press](http://www.vector-informatik.com/press)

**About Vector Informatik GmbH (Revised: 01/01/2007):**

Vector Informatik is the leading producer of software tools and components for networking in electronic systems based on CAN, LIN, MOST and FlexRay as well as a number of CAN-based protocols.

This know-how is conveyed in the form of products or as a comprehensive consultation package with system and software engineering. Workshops and seminars round out our multifaceted training program.

Worldwide customers in the automotive, heavy-duty vehicle, transport and control engineering fields rely on solutions and products from the autonomous and independently-owned Vector Group.

Vector Informatik, founded in 1988, currently employs 680 people together with Vector Consulting GmbH and in the year 2005 achieved sales of 89 million euros. In addition to its headquarters in Stuttgart, Vector Informatik also has an international presence with subsidiaries in the USA, Japan, France and Sweden.