

### **CANape 8.0 Simplifies Optimization of ECU Parameters**

**Efficient analysis of Simulink models in ECU functional development**

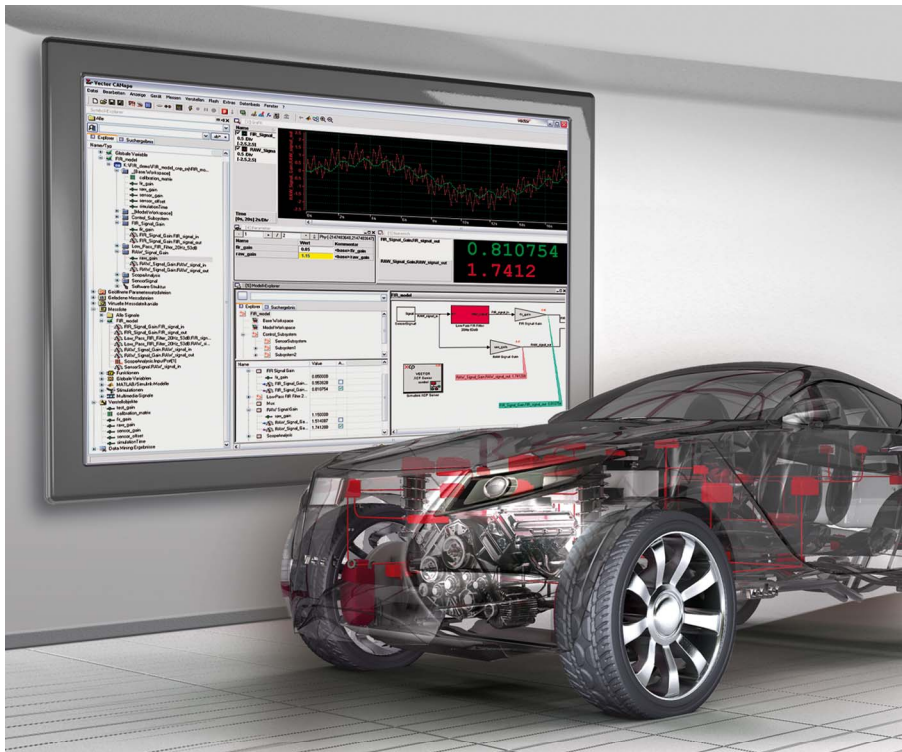
**Stuttgart, 08-17-2009 – Vector released CANape 8.0 – the latest version of its development software for ECU calibration. It accelerates optimal calibrating of ECUs in the vehicle by extended measurement data acquisition, optimized calibration data management and new data mining functions for automated data evaluation. The new “Simulink XCP Server” option will benefit both functional and software developers with convenient parameter setting as well as quick access to measurement variables of the Simulink model directly in CANape.**



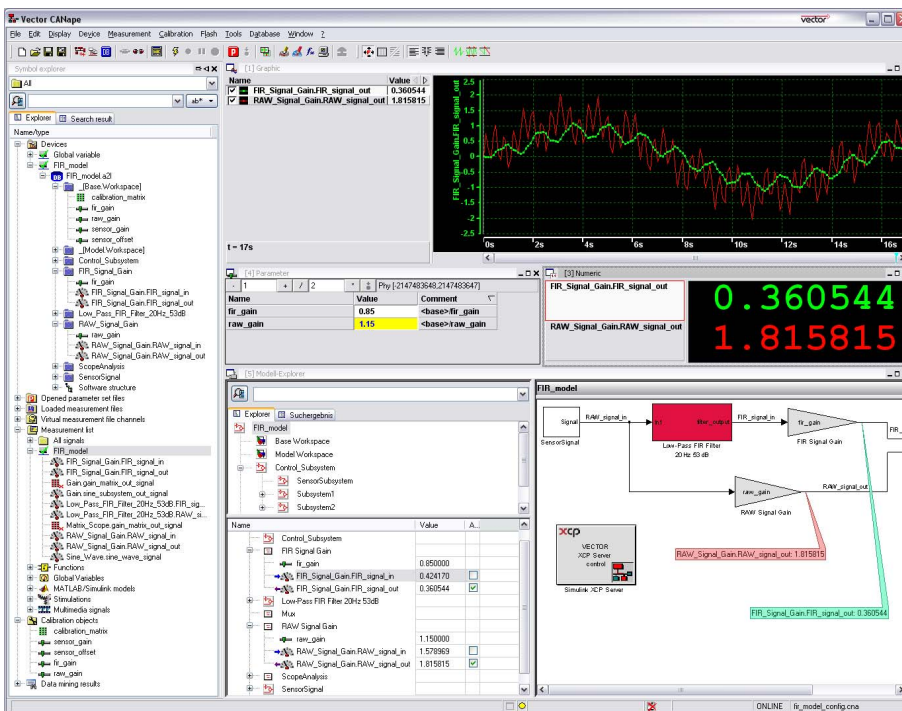
Easy access to MATLAB/Simulink models directly in the CANape option “Simulink XCP Server” simplifies tasks for developers tremendously. Now Simulink models can be visualized and parameterized easily and efficiently. Models can be stimulated with real generated measurement data as an input vector, which resembles actual conditions in testing models. Using CANape 8.0 makes the test phase with Simulink more advantageous as a universal front-end for model related measurement and calibration tasks. The communication between CANape and the Simulink model is implemented via the ASAM-standardized XCP-on-Ethernet protocol without instrumentation.

A handy data mining user interface is provided in CANape 8.0 to enable automatic evaluation of logged measurement data. Users running batch operations of parameter set management in CDM Studio can now restore them using the Undo and Redo functions. Vector has also added the support of the .NET script language to significantly reduce the effort required to create and manage the exchange of diagnostic scripts between the Vector tools CANoe, CANape, CANDito and Indigo.

For more information on the Internet go to: [www.vector.com/canape](http://www.vector.com/canape)



[Figure 1: Optimal calibration of ECU parameters with the measurement, calibration and diagnostic tool CANape]



[Figure 2: Convenient navigation and quick access to objects of the Simulink model in CANape supports efficient analysis of model behavior]

Revised: 8/2009  
Word count: 254  
Character count: 1,770

Vector Informatik GmbH  
Ingersheimer Str. 24  
70499 Stuttgart  
Germany  
[www.vector.com](http://www.vector.com)

You can also find this and other press releases on our website at:  
[www.vector.com/press](http://www.vector.com/press)

We would appreciate a print copy of the published material.  
If you have any questions before publication please feel free to  
contact us:

Editorial contact persons:

Vector Informatik, Germany (Article available in English and German)  
Ms. Heike Tippenhauer,  
Tel. +49 711 80670-5203, Fax. +49 711 80670-585203,  
E-mail: [heike.tippenhauer@vector.com](mailto:heike.tippenhauer@vector.com)

Vector CANtech, North America (Article available in English)  
Ms. Angela Ferrero,  
Tel. +1 248 504 6447, Fax. +1 248 449 9704,  
E-mail: [angela.ferrero@vector.com](mailto:angela.ferrero@vector.com)

Vector GB Ltd., Great Britain (Article available in English)  
Mr. Uwe Gerlinger,  
Tel. +44 7530 264701,  
E-mail: [uwe.gerlinger@vector.com](mailto:uwe.gerlinger@vector.com)

Vector France (Article available in French)  
Ms. Françoise Dessertine,  
Tel. +33 1 4 231 4000, Fax. +33 1 4 231 4009,  
E-mail: [francoise.dessertine@vector.com](mailto:francoise.dessertine@vector.com)

Vector Scandinavia, Sweden (Article available in Swedish)  
Mr. Henrik Pihlgren,  
Tel. +46 31 764 76 10, Fax. +46 31 764 76 19,  
E-mail: [henrik.pihlgren@vector.com](mailto:henrik.pihlgren@vector.com)

Vector Japan (Article available in Japanese)  
Mr. Takushi Hieda,  
Tel. +81 3 5769 6981, Fax. +81 3 5769 6975,  
E-mail: [takushi.hieda@vector.com](mailto:takushi.hieda@vector.com)

Vector Korea (Article available in Korean)  
Mr. Ronald Yang,  
Tel. +82 2 2028 0602, Fax. +82 10 4109 2029  
E-mail: [ronald.yang@vector.com](mailto:ronald.yang@vector.com)

**About Vector Group (Revised: 08-01-2009):**

Vector Informatik is the leading producer of software tools and components for networking in electronic systems based on CAN, LIN, FlexRay and MOST, as well as a number of CAN-based protocols.

This know-how is conveyed in our products or our comprehensive consultation package with system and software engineering. Workshops and seminars round out our multifaceted training program. Worldwide customers in the automotive, heavy-duty vehicle, transport and control engineering fields rely on solutions and products from the independently-owned Vector Group. Vector Informatik, founded in 1988, currently employs 885 people, together with Vector Consulting GmbH, which in 2008 achieved sales of 131 million euros. In addition to its headquarters in Stuttgart, Vector Informatik also has an international presence, with subsidiaries in the USA, Japan, France, Great Britain, Sweden, the Republic of Korea, and India.