



Manual

CANcaseXL CANcaseXL log

Version 5.0

English

Imprint

Vector Informatik GmbH
Ingersheimer Straße 24
D-70499 Stuttgart

The information and data given in this user manual can be changed without prior notice. No part of this manual may be reproduced in any form or by any means without the written permission of the publisher, regardless of which method or which instruments, electronic or mechanical, are used. All technical information, drafts, etc. are liable to law of copyright protection.

© Copyright 2012, Vector Informatik GmbH. Printed in Germany.
All rights reserved.

Art. 80082

Table of contents

1	Introduction	3
1.1	About this User Manual	4
1.1.1	Certification	5
1.1.2	Warranty	5
1.1.3	Support	5
1.1.4	Registered trademarks	5
2	CANcaseXL and CANcaseXL log	7
2.1	Introduction	8
2.2	Driver Installation	8
2.3	Connectors	9
2.3.1	USB Connector	9
2.3.2	Binder Connector	9
2.3.3	External Trigger Input	10
2.3.4	D-SUB9 Connector	10
2.4	Synchronization	10
2.4.1	Software Sync	10
2.4.2	Hardware Sync	11
2.5	LED Display	11
2.6	Additional Features on CANcaseXL log	12
2.6.1	Operating Modes	12
2.6.2	Additional LEDs	12
2.6.3	Piezo Buzzer	14
2.6.4	Memory Card	14
2.6.5	Battery	14
2.6.6	CANcaseXL log Flowchart	15
2.7	Replacing Piggybacks	16
2.8	Technical Data	17
3	CANcaseXL/log Accessories	19
3.1	Accessories	20
4	Appendix A: Addresses	21

1 Introduction

In this chapter you find the following information:

1.1	About this User Manual	page 4
	Certification	
	Warranty	
	Support	
	Registered trademarks	

1.1 About this User Manual

To find information quickly








This user manual provides you with the following access help:

- ➔ At the beginning of each chapter you will find a summary of the contents
- ➔ In the header you can see in which chapter and paragraph you are

Conventions

In the two following charts you will find the conventions used in the user manual regarding utilized spellings and symbols.

Style	Utilization
bold	Blocks, surface elements, window- and dialog names of the software. Accentuation of warnings and advices. [OK] Push buttons in brackets File Save Notation for menus and menu entries
Microsoft	Legally protected proper names and side notes.
Source Code	File name and source code.
Hyperlink	Hyperlinks and references.
<CTRL>+<S>	Notation for shortcuts.

Symbol	Utilization
	Here you can obtain supplemental information.
	This symbol calls your attention to warnings.
	Here you can find additional information.
	Here is an example that has been prepared for you.
	Step-by-step instructions provide assistance at these points.
	Instructions on editing files are found at these points.
	This symbol warns you not to edit the specified file.

1.1.1 Certification

Certified Quality Management System Vector Informatik GmbH has ISO 9001:2008 certification. The ISO standard is a globally recognized standard.

1.1.2 Warranty

Restriction of warranty We reserve the right to change the contents of the documentation and the software without notice. Vector Informatik GmbH assumes no liability for correct contents or damages which are resulted from the usage of the documentation. We are grateful for references to mistakes or for suggestions for improvement to be able to offer you even more efficient products in the future.

1.1.3 Support

You need support? Please check the addresses at the end of this manual for your local support.

1.1.4 Registered trademarks

Registered trademarks All trademarks mentioned in this documentation and if necessary third party registered are absolutely subject to the conditions of each valid label right and the rights of particular registered proprietor. All trademarks, trade names or company names are or can be trademarks or registered trademarks of their particular proprietors. All rights which are not expressly allowed are reserved. If an explicit label of trademarks, which are used in this documentation, fails, should not mean that a name is free of third party rights.

→ **Windows, Windows XP, Windows Vista, Windows 7** are trademarks of the Microsoft Corporation.

2 CANcaseXL and CANcaseXL log

In this chapter you find the following information:

2.1	Introduction	page 8
2.2	Driver Installation	page 8
2.3	Connectors	page 9
	USB Connector	
	Binder Connector	
	External Trigger Input	
	D-SUB9 Connector	
2.4	Synchronization	page 10
	Software Sync	
	Hardware Sync	
2.5	LED Display	page 11
2.6	Additional Features on CANcaseXL log	page 12
	Operating Modes	
	Additional LEDs	
	Piezo Buzzer	
	Memory Card	
	Battery	
	CANcaseXL log Flowchart	
2.7	Replacing Piggybacks	page 16
2.8	Technical Data	page 17

2.1 Introduction

- CANcaseXL** The CANcaseXL is a USB interface with a powerful 32 bit 64MHz microcontroller from ATMEL with ARM7 Core and two SJA1000 CAN controllers from Philips. It can process CAN messages with either 11-bit or 29-bit identifiers. It is also possible to receive and analyze Remote Frames without any limitations. The CANcaseXL is also capable of generating and detecting Error frames on the bus.
- CANcaseXL log** The CANcaseXL log offers the same features as the CANcaseXL, but it can also be used as a data logger for CAN and LIN messages. The logged data is saved on industrial-grade SD cards (see section [Memory Card](#) on page 14).
- Configuration** The CANcaseXL/log can be configured with the **Vector Hardware Config** tool (**Windows | Start | Settings | Control Panel | Vector Hardware**). Further details about the tool can be found in the separate installation instructions at the end of this manual.
- Bus types** Various transceivers are available to interface the CANcaseXL/log to a particular type of bus. These CAN and LIN transceivers can be purchased as plug-in boards (Piggybacks) and can be mounted inside the CANcaseXL/log. For information on installing transceivers please refer to section [Replacing Piggybacks](#) on page 16. A list of available Piggybacks is included in the accessories manual on the driver CD:
`\Documentation\Accessories_for_Network_Interfaces.pdf`

2.2 Driver Installation



Note: Information about the driver installation process can be found in the separate installation instructions at the end of this manual.

2.3 Connectors

General information The CANcaseXL has the following connectors:

- USB connector for the usage with PC in Interface Mode
- Binder connector (type 712) for power supply, synchronization and trigger
- two D-SUB9 connectors for independent CAN/LIN operation

The CANcaseXL log also has:

- an SD card slot for data logging



Note: In Interface Mode, the SD card cannot be accessed if bus activities take place or if an application accesses the device.



Note: The CANcaseXL log is delivered with a 2GB SD card.

2.3.1 USB Connector

Description The CANcaseXL/log is connected to an USB port which also supplies the CANcaseXL/log in Interface Mode.

2.3.2 Binder Connector

Description If the USB port is not capable of supplying the required 500 mA operating current, the CANcaseXL/log may be optionally supplied by an external power supply. The CANcaseXL/log provides a 3-pin Binder connector for this purpose. Available power supplies can be found in the accessories manual on the driver CD.

Pin	Assignment
1	Voltage supply 7 V...33 V (recommended 12 V)
2	Synchronization line / external trigger input
3	Ground



Warning: It is recommended to connect the logger to the same voltage supply (e.g. battery of the vehicle) as the vehicle or test equipment.

If two different voltage supplies are being used for logger and test equipment, the ground (GND) pins of the two voltage supplies must be connected.

2.3.3 External Trigger Input

Description In Logging Mode, pin 2 of the 3-pin Binder connector acts as a trigger input. You can initiate triggers by pulling down pin 2 to GND. The trigger input is low active, i.e. a trigger occurs by a falling edge.



Warning: The external trigger input is designed for 5 V (TTL) and must not be tied to 12 V!

2.3.4 D-SUB9 Connector

Description The CANcaseXL/log is connected to the CAN or LIN bus (Channel1 and Channel2) via a 9-pin D-SUB socket. The pin assignments of the D-SUB9 connectors depend on the Piggybacks being used. Further information can be found in the accessories manual on the driver CD.

2.4 Synchronization

General information Time stamps, which are created during a measurement by two or more devices of the Vector interface family, can be synchronized by software or hardware.

2.4.1 Software Sync

Synchronization by software The software synchronization is driver-based and available for all applications without any restrictions. This kind of synchronization can be switched on in **Vector Hardware Config | General information | Settings | Software time synchronization**.

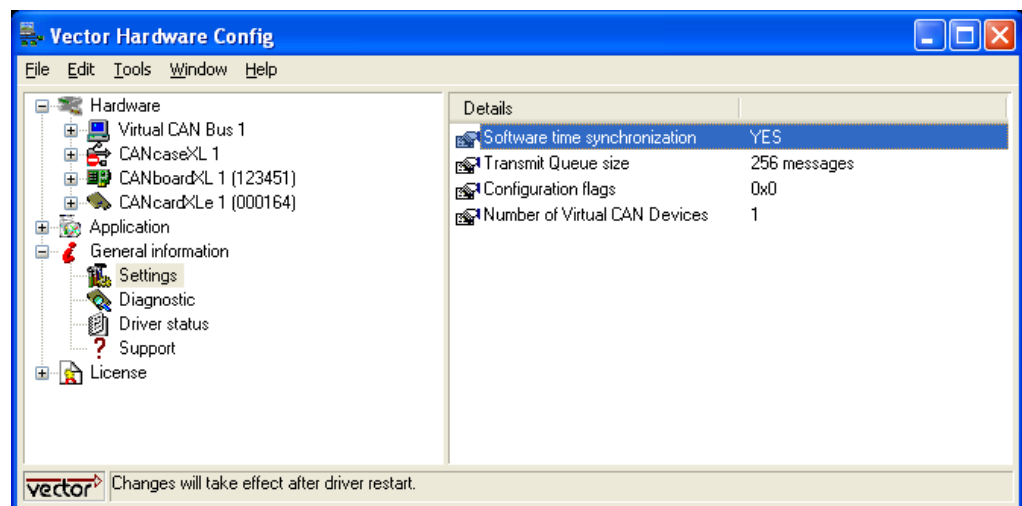


Figure 1: Switching on the software synchronization.

The accuracy of the time stamp correction depends on the device and is typically 50 μ s.

2.4.2 Hardware Sync

Synchronization by hardware

A more precise synchronization of multiple devices is possible via the hardware synchronization. The hardware synchronization with a maximum of four devices is done with the SYNCcableXL (see accessories manual, article number 05018) and has to be supported by the application. The accuracy of the time stamp correction depends on the application and is typically 1 μ s.

Functionality of the hardware synchronization

The devices to be synchronized must be interconnected by a two-wire bus (signals: SYNC and GND). The devices have a 3-pin connector for this use case (Binder type 712).

At each high-low edge of the sync line the CANcaseXL/log generates a time stamp that is provided to the application. This allows the application to synchronize the time stamps of different devices to a common time base.

The synchronization edges can be generated by the VN or the XL interface family.



Note: The hardware synchronization must be supported by the application. For further information please refer to the relevant manual. Please note that the software synchronization must be disabled (see **Vector Hardware Config | General information | Settings | Software time synchronization**) if the hardware synchronization is used.

2.5 LED Display

Description

The CANcaseXL/log has three LEDs for each channel (Channel1 and Channel2). The LEDs indicate the direction of the message and any error frame that occurs:

Rx	Tx	Err	Meaning
(())	-	-	Active if messages are being received.
-	(())	-	Active if messages are being sent.
-	-	(())	Active if error events occur on the bus. Only in Logger Mode: Blinking LED means that the related channel is not „on bus“.

(()) : Blinking or flashing LED.

2.6 Additional Features on CANcaseXL log

2.6.1 Operating Modes

Description The CANcaseXL log supports two operating modes which can be switched by using the USB connection and power supply respectively:

USB connection	Req. ext. voltage supply	Mode
yes	optional	Interface / Logger configuration
no	yes	Logger

Interface Mode In Interface Mode, the CANcaseXL log operates as a CAN/LIN interface between a PC and the bus. Messages can be received and sent over both channels with suitable tools.

Logger Mode The Logger Mode enables the PC independent usage of the CANcaseXL log and allows the logging of CAN and LIN events. For this purpose the CANcaseXL log must be unplugged from the USB connector of the PC and externally supplied via the Binder connector.



Note: For the Logger Mode configuration, the additional tool **XL log Config** is available on the driver CD: `\Tools\CANcaseXL_log`.



Warning: During logging, the CANcaseXL log may not be connected to the PC via the USB cable, since the Logger Mode would otherwise be exited! However, the CANcaseXL log must be in the Interface Mode to configure the Logger Mode.

2.6.2 Additional LEDs

Status and Data The CANcaseXL log has additional LEDs for **Status** and **Data** with the following meaning:

Status	Data	Meaning
off	off	Device is not operating. Device is in Interface Mode without SD card.
green	*	Device is in Interface Mode with a valid SD card.
red	*	Device is in Interface Mode with an invalid SD card.
orange	orange	Device is booting in Logger Mode.
green	off	Device is waiting for an SD card.
green	((green))	Device is accessing the SD card.
((green))	*	Device is ready for logging. Device is waiting for trigger.
((red))	off	Device reports an error and stops logging.

Status	Data	Meaning
((orange))	*	Warning: The SD card contains less than 10% of free space. The logging is not stopped.
*	((orange))	Warning: Critical data rate, but no messages are lost. The logging is not stopped. The LED state will change when the critical data rate decreases.
*	((red))	Error: Too high data rate, messages are lost. The logging is not stopped but the LED state will not change till the device is rebooted.

* : Alternating state of the LED, depending on data transmission.

(()) : Blinking or flashing LED.

2.6.3 Piezo Buzzer

Trigger event signals The CANcaseXL log has a piezo buzzer that acoustically alerts the user to internal trigger events. Triggers may be defined using the **XL log Config** configuration tool (driver CD: \Tools\CANcaseXL_log).

2.6.4 Memory Card

Inserting and removing the SD card

The CANcaseXL log has a push-and-pull card holder in which the SD card is inserted and removed. To insert a SD card push it until it latches in place securely. To remove the SD card push it into the holder slot a little bit until it unlatches then let it go and it will spring out of its latched position.



Warning: Do not pull the SD card from the card holder forcefully, since this could cause mechanical damage!

Formatting the SD card

Before the SD card can be used it has to be formatted with the configuration tool **XL log Config** (driver CD: \Tools\CANcaseXL_log).

Memory requirements

A single CAN message needs up to 20 byte, a single LIN message needs up to 108 bytes on the memory card.

CardFix Kit

The standard delivery of the CANcaseXL log allows the user to insert and remove the SD card from outside. In some situations, e.g. to prevent thefts, the inserted SD card shall not be removable. The **CardFix Kit** is a good protection because the back side plate with the SD card slot is replaced by a closed plate. Thus the SD card cannot be removed so easily anymore. The **CardFix Kit** can be ordered at Vector (article number 07132).



Warning: The CANcaseXL log must be opened for this modification! A detailed instruction is delivered with the kit. However, the modification of your CANcaseXL log can be done by our service.

2.6.5 Battery

Lifetime

The CANcaseXL log is supplied with a lithium battery that has a typical durability of 5 years. It is responsible for the correct timing of the integrated clock.

2.7 Replacing Piggybacks



Warning: When performing this operation be sure not to touch the top or bottom of the boards (CANcaseXL/log main board or Piggybacks).



1. First, loosen the CANcaseXL/log housing screws on the side with the D-SUB9 connector. This requires removing the two black decorative caps. Then carefully pull the PC-board out of the housing.
2. You will find mounting location 1 (Channel 1) at the center of the PC-board and mounting location 2 (Channel 2) at the edge of the PC-board.
3. Each of the two Piggybacks is fastened by a screw and retainer. Please loosen the appropriate screw including the retainer and carefully remove the Piggyback from the mounting location.
4. Insert the replacement Piggyback. When doing this please make sure that the single and dual-row connectors are not laterally offset.
5. Secure the new Piggyback with the appropriate screw and retainer.
6. Place the CANcaseXL/log main board back in the housing verifying that it is inserted properly. This operation involves placing the housing on a table with its back side (side with the bar code) facing upward. Then the main board is inserted into the upper guide rails with the Piggybacks facing upward.
7. It should be possible to slide the main board in the housing up to a few millimeters from the end without forcing it in. Close the housing by applying light pressure, and then secure it with the appropriate screw fasteners. The screws should be secure but not excessively tight.
8. Please also attach the two black decorative caps.

2.8 Technical Data

CANcaseXL/log

Housing	Robust metal housing
Display	Status display with three LEDs per channel
Channels	2x, independent
Transceiver	Pluggable CANpiggies or LINpiggies
CAN controller	2 Phillips SJA 1000
Microcontroller	ATMEL AT91R40008 32 bit 64 MHz
Max. baud rate	1 Mbit/s
Time stamp accuracy	1 µs
Error frame	Detecting and generating
PC interface	USB 1.1 and 2.0
Ext. Voltage supply (typ.)	7 V ... 33 V
Current supply	by USB, external supply optional
Current consumption (without SD card)	90 mA (12 V) for CANcaseXL/log Typ. 30 mA for CANpiggy 251
Memory media	SD card (max. 2 GB)
Configuration	Plug & Play
Dimensions	approx. 105 mm x 85 mm x 32 mm
Weight	approx. 210 g without CANpiggies
Temperature range	Operating: -20...70 °C Shipping and storage: -40...85 °C
Relative humidity of ambient air	15 %...95 %, not condensation
Software requirement	Windows XP (SP3) Windows Vista (SP1) Windows 7

CANcaseXL log

Operating modes	Interface and Logger
Memory function	Logging on SD card
Additional display	Status display with two LEDs
Extras	Real time clock and piezo buzzer
Startup time (logger mode)	1 second after switching on
Current supply	External in Logger Mode

3 CANcaseXL/log Accessories

In this chapter you find the following information:

3.1 Accessories

page 20

3.1 Accessories



Reference: Further information about the available accessories can be found in the separate accessories manual on the driver CD:

`\Documentation\Accessories_for_Network_Interfaces.pdf`

4 Appendix A: Addresses

Vector Informatik GmbH

Vector Informatik GmbH
Ingersheimer Str. 24
70499 Stuttgart
Germany
Support: +49 711 80670-200
Phone: +49 711 80670-0
Fax: +49 711 80670-111
<mailto:info@de.vector.com>
<http://www.vector.com>

Vector CANtech, Inc.

Vector CANtech, Inc.
39500 Orchard Hill Place
Suite 550
Novi, Mi 48375
USA
Support: +1 248 449 9290 Option 2
Phone: +1 248 449 9290
Fax: +1 248 449 9704
<mailto:info@us.vector.com>
<http://www.vector.com>

Vector Automotive Technology (Shanghai) Co., Ltd.

Vector Automotive Technology (Shanghai) Co., Ltd.
Sunyoung Center
Room 1701, No.398 Jiangsu Road
Changning District
Shanghai 200050
China
Phone: +86 21 6432 53530
Fax: +86 21 6432 5308
<mailto:info@cn.vector.com>
<http://www.vector.com>

Vector France SAS

Vector France SAS
168, Boulevard Camélinat
92240 Malakoff
France
Support: +33 1 4231 4010
Phone: +33 1 4231 4000
Fax: +33 1 4231 4009
<mailto:information@fr.vector.com>
<http://www.vector.com>

Vector GB Ltd.	<p>Vector GB Ltd. Rhodium Central Boulevard Blythe Valley Park Solihull, Birmingham West Midlands B90 8AS United Kingdom</p> <p>Support: +44 121 50681-77 Phone: +44 121 50681-50</p> <p>mailto:info@uk.vector.com http://www.vector.com</p>
Vector Informatik India Pvt. Ltd.	<p>Vector Informatik India Pvt. Ltd. Lokesh Madan 4/1/1/1, Sutar Icon, Sus Road Pashan, Pune - 411 021 India</p> <p>Phone: +91 20 2587 2023 Fax: +91 20 2587 2025</p> <p>mailto:info@in.vector.com http://www.vector.com</p>
Vector Japan Co., Ltd.	<p>Vector Japan Co., Ltd. Seafort Square Center Bld. 18F, 2-3-12, Higashi-shinagawa, Shinagawa-ku Tokyo 140-0002 Japan</p> <p>Support: +81 3 5769 7800 Phone: +81 3 5769 7800 Fax: +81 3 5769 6975</p> <p>mailto:info@jp.vector.com http://www.vector.com</p>
Vector Korea IT Inc.	<p>Vector Korea IT Inc. #1406 Mario Tower 222-12 Guro-dong, Guro-gu Seoul, 152-848 Republic of Korea</p> <p>Support: : +82 2 807 0600 Ext.2 Phone: +82 2 807 0600 Fax: +82 2 8070601</p> <p>mailto:info@kr.vector.com http://www.vector.com</p>

VecScan AB

VecScan AB
Theres Svenssons Gata 9
417 55 Göteborg
Sweden

Support: +46 (31) 764 76-00

Phone: +46 (31) 76476-00

Fax: +46 (31) 76476-19

<mailto:info@se.vector.com>

<http://www.vector.com>

Manual

Installation Instructions

Version 3.0

English

Imprint

Vector Informatik GmbH
Ingersheimer Straße 24
D-70499 Stuttgart

The information and data given in this user manual can be changed without prior notice. No part of this manual may be reproduced in any form or by any means without the written permission of the publisher, regardless of which method or which instruments, electronic or mechanical, are used. All technical information, drafts, etc. are liable to law of copyright protection.

© Copyright 2012, Vector Informatik GmbH. Printed in Germany.
All rights reserved.

Table of contents

1	Introduction	3
1.1	About this User Manual	4
1.1.1	Certification	5
1.1.2	Warranty	5
1.1.3	Support	5
1.1.4	Registered Trademarks	5
2	Driver Installation	7
2.1	Minimum Requirements	8
2.2	Hints	8
2.3	Vector Driver Setup	9
2.4	Vector Hardware Configuration	11
3	Operating Test	13
3.1	Loop Test	14
3.1.1	CAN	14
3.1.2	FlexRay	16
3.1.3	MOST	17
4	Appendix A: Addresses	19

1 Introduction

In this chapter you find the following information:

1.1	About this User Manual Certification Warranty Support Registered Trademarks	page 4
-----	---	--------

1.1 About this User Manual

To find information quickly








This user manual provides you with the following access help:

- ➔ At the beginning of each chapter you will find a summary of the contents
- ➔ In the header you can see in which chapter and paragraph you are

Conventions

In the two following charts you will find the conventions used in the user manual regarding utilized spellings and symbols.

Style	Utilization
bold	Blocks, surface elements, window- and dialog names of the software. Accentuation of warnings and advices. [OK] Push buttons in brackets File Save Notation for menus and menu entries
Microsoft	Legally protected proper names and side notes.
Source Code	File name and source code.
Hyperlink	Hyperlinks and references.
<CTRL>+<S>	Notation for shortcuts.

Symbol	Utilization
	Here you can obtain supplemental information.
	This symbol calls your attention to warnings.
	Here you can find additional information.
	Here is an example that has been prepared for you.
	Step-by-step instructions provide assistance at these points.
	Instructions on editing files are found at these points.
	This symbol warns you not to edit the specified file.

1.1.1 Certification

Certified Quality Management System Vector Informatik GmbH has ISO 9001:2008 certification. The ISO standard is a globally recognized standard.

1.1.2 Warranty

Restriction of warranty We reserve the right to change the contents of the documentation and the software without notice. Vector Informatik GmbH assumes no liability for correct contents or damages which are resulted from the usage of the documentation. We are grateful for references to mistakes or for suggestions for improvement to be able to offer you even more efficient products in the future.

1.1.3 Support

You need support? Please check the addresses at the end of this manual for your local support.

1.1.4 Registered Trademarks

Registered trademarks All trademarks mentioned in this documentation and if necessary third party registered are absolutely subject to the conditions of each valid label right and the rights of particular registered proprietor. All trademarks, trade names or company names are or can be trademarks or registered trademarks of their particular proprietors. All rights which are not expressly allowed are reserved. If an explicit label of trademarks, which are used in this documentation, fails, should not mean that a name is free of third party rights.

→ **Windows, Windows XP, Windows Vista, Windows 7** are trademarks of the Microsoft Corporation.

2 Driver Installation

In this chapter you find the following information:

2.1	Minimum Requirements	page 8
2.3	Vector Driver Setup	page 9
2.4	Vector Hardware Configuration	page 11

2.1 Minimum Requirements

Hardware

CPU	Pentium 4 or higher
Memory	512 MB or more
Network interface	CANcardXL : PCMCIA CANcardXLe : ExpressCard 54 CANboardXL PCI : PCI CANboardXL PCIe : PCI Express 1x CANboardXL PXI : Compact PCI/PXI CANcaseXL : USB CANcaseXL log : USB VN1610 : USB VN1611 : USB VN1630 : USB VN2610 : USB VN2640 : USB VN3300 : PCI VN3600 : USB VN7600 : USB VN8910 : USB

Software

Operating system	Windows XP SP3 (32 bit) Windows Vista SP1 (32 bit) Windows 7 (32/64 bit)
Driver version	8.x
Measurement application	The devices can be run with several applications from Vector (e. g. CANoe, CANalyzer) or with measurement applications from other companies. Therefor the devices require a related license. Applications based on the Vector XL Driver Library can be run without a license.

2.2 Hints



Note: Many desktop PCs have power managers which block the CPU for a specific time. This impairs accuracy of the time system. If your application has stringent timing requirements (e. g. time-driven sending of messages or time-driven evaluations), you have to deactivate these power managers. Power management settings may be contained in the BIOS setup or on the Control Panel of **Windows XP / Vista / Windows 7** (e. g. Power options).

No further mention will be made of the power manager in this document.



Info: Please note that you will need **Administrator Rights** for the following steps.

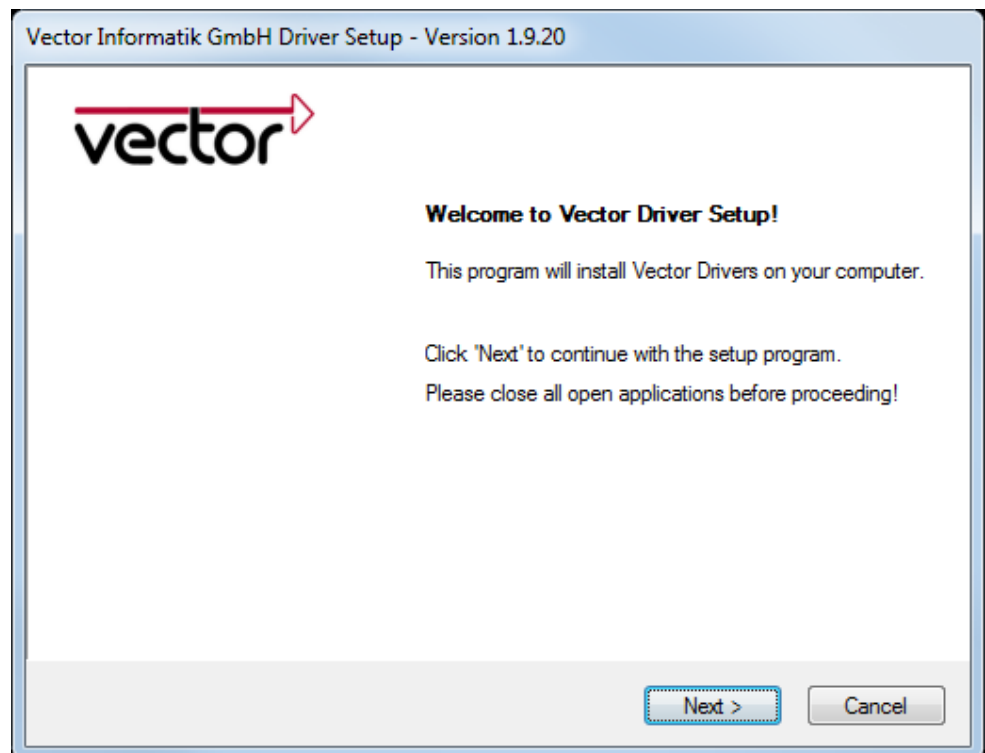
2.3 Vector Driver Setup

General information The Vector Driver Disk offers a driver setup which allows the installation or the removal of Vector devices.



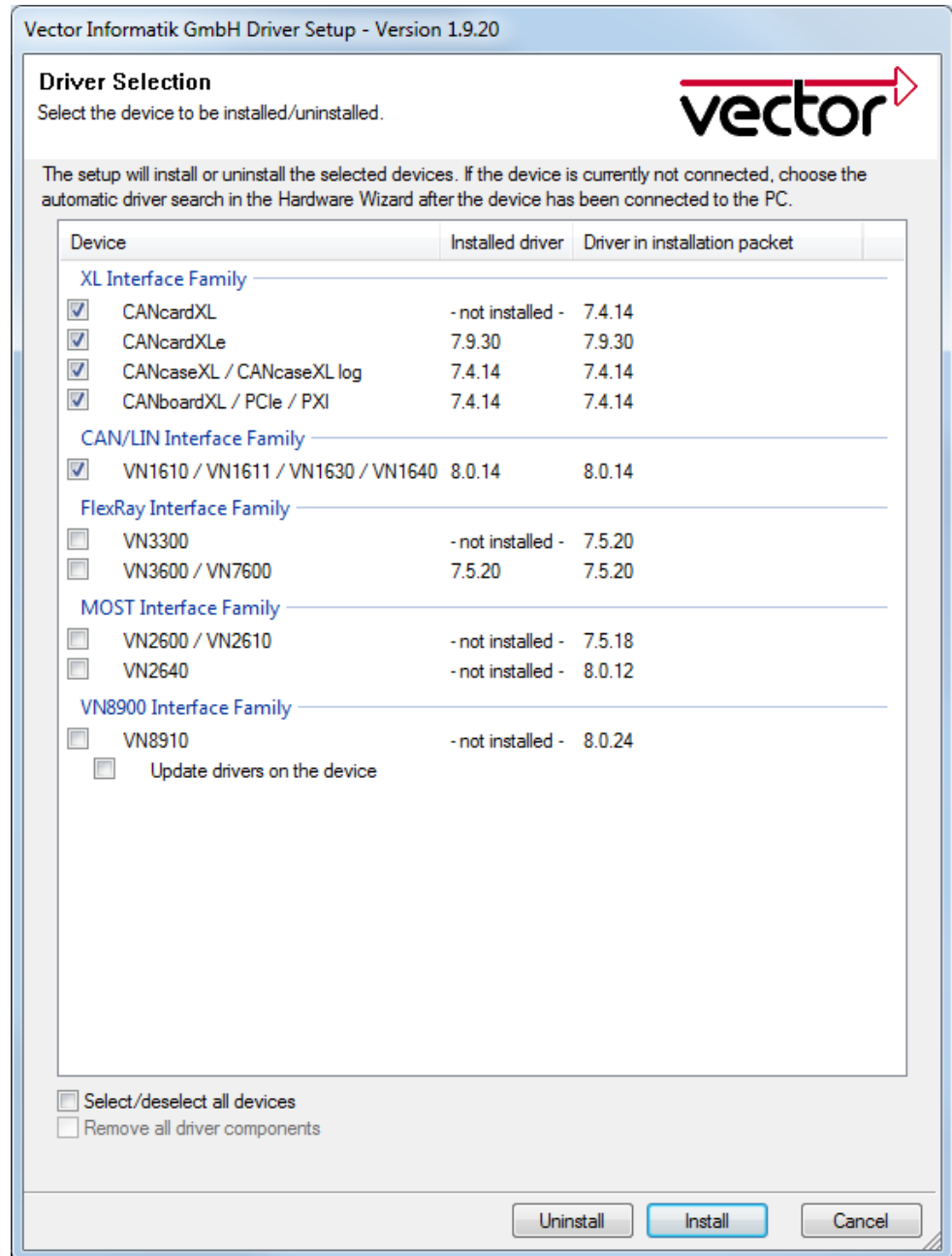
1. Execute the driver setup from the autostart menu or directly from `\Drivers\Setup.exe` before the device is inserted or connected to the PC with the included USB cable.

If you have already inserted or connected the device to the PC, the **Windows found new Hardware** wizard appears. Close this wizard and then execute the driver setup.



2. Click **[Next]** in the driver setup dialog. The initialization process starts.

- In the driver selection dialog select your devices to be installed (or to be uninstalled).



- Click **[Install]** to execute the driver installation, or **[Uninstall]** to remove existing drivers.
- A confirmation dialog appears. Click **[Close]** to exit.
If the driver has been properly installed, the device can be inserted or connected to the PC with the included USB cable. The device is ready for operation now.
- For Windows XP users only:
If the **Windows found new Hardware** wizard appears, select the option for automatic driver search to complete the installation.

2.4 Vector Hardware Configuration

Executing Vector Hardware Config

After the successful installation you will find the configuration application **Vector Hardware** in the Control Panel (see below). The tool gives you information about the connected and installed Vector devices. There are also several settings that can be changed.

Control panel Windows XP

→ Category view
Start | (Settings) | Control Panel, click in the left part of the window for further Control Panel options followed by **Vector Hardware**.

→ Classic view
Start | (Settings) | Control Panel, click **Vector Hardware** in the list.

Control panel Windows Vista

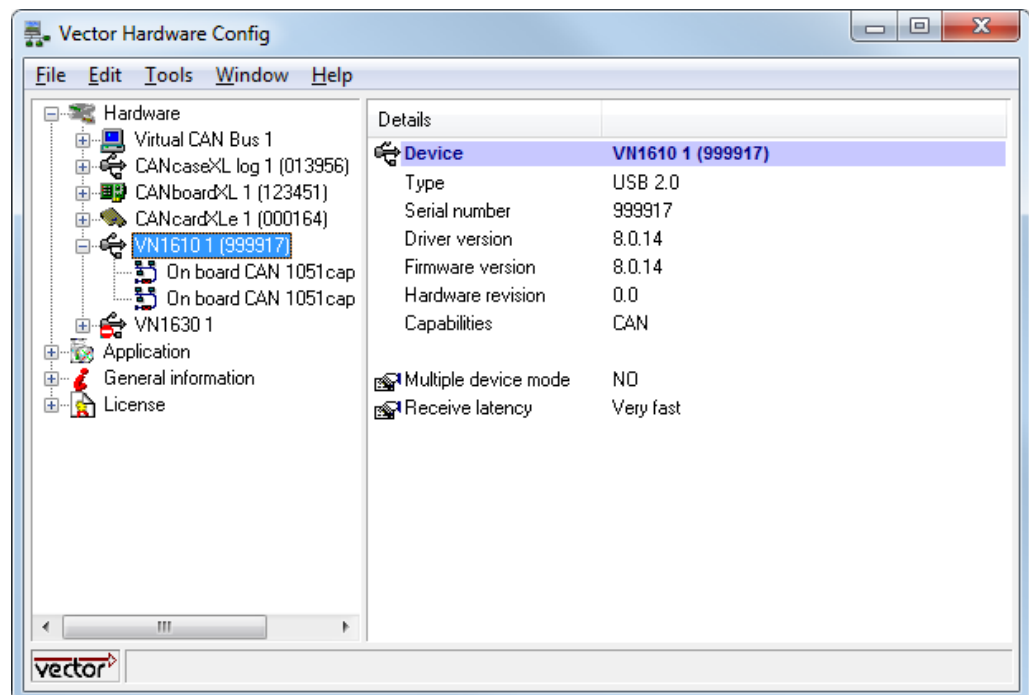
→ Category view
Start | (Settings) | Control Panel, click in the right part of the window for Additional Options followed by **Vector Hardware**.

→ Classic view
Start | (Settings) | Control Panel, click **Vector Hardware** in the list.

Control panel Windows 7

→ Category view
Start | Control Panel | Hardware and Sound, click **Vector Hardware** in the list.

→ Symbols view
Start | Control Panel, click **Vector Hardware** in the list.



The tool is split into two windows. The left window lets you access the installed Vector devices, the right window displays the details of the selection. The following nodes are available in the left window:

Hardware

Each installed Vector device is shown in **Hardware**. Additional details of available channels are shown in a tree view. Status information on the device components and the channels are also shown in this dialog.

Application

In **Application** all available applications are shown with their configured channels. If you click on an application, all of its channels are displayed in the right pane on the screen.

General information

The **General information** section contains general information on Vector devices and applications.

License

The **License** section contains information on all currently valid licenses.



Note: You will find a detailed description of **Vector Hardware Config** in the online help ([Help](#) | [Contents](#)).

3 Operating Test

In this chapter you find the following information:

3.1	Loop Test	page 14
	CAN	
	FlexRay	
	MOST	

3.1 Loop Test

Operating test The test described here can be performed to check the functional integrity of the driver and the device. This test is identical for **Windows XP**, **Windows Vista**, **Windows 7** and independent of the application being used.

3.1.1 CAN

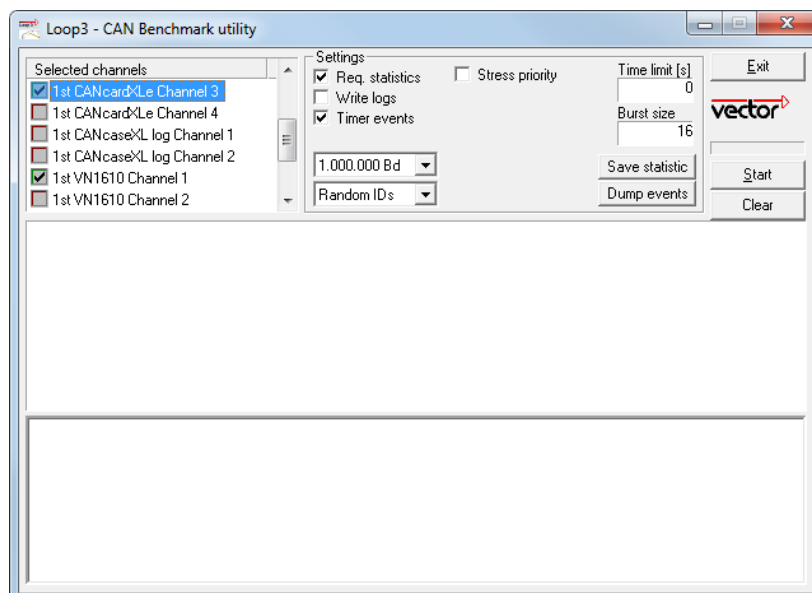
Device test The operating test for CAN can be executed with the following devices:

- CANcardXL
- CANcardXLLe
- CANcaseXL
- CANcaseXL log
- CANboardXL Family
- VN1610
- VN1630
- VN7600

Loop3.exe Either two High-Speed or two Low-Speed transceivers are necessary for this functional test:

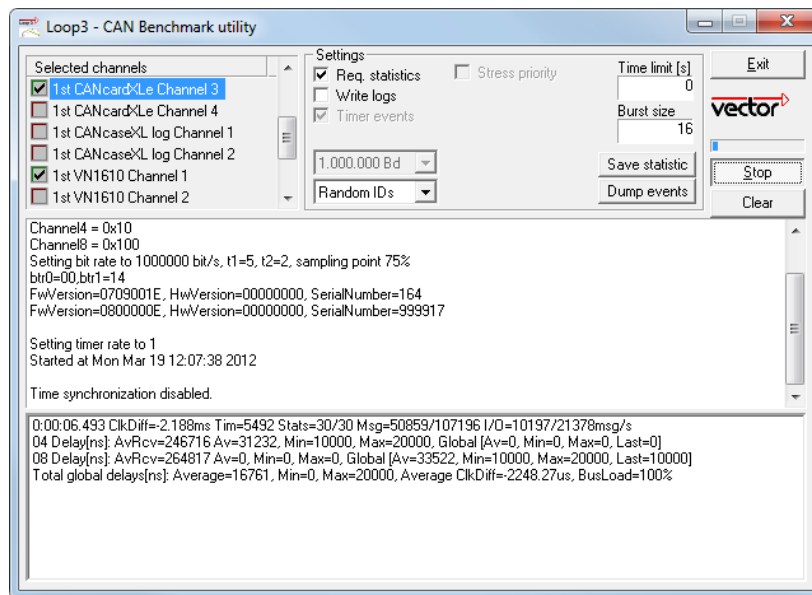


1. Connect two CAN channels with a suitable cable. If two High-Speed transceivers are being used, we recommend our **CANcable 1** (**CANcable 0** for Low-Speed transceivers).
2. Start `\Drivers\Common\Loop3.exe` from the driver CD. This program accesses the Vector devices and transmits CAN messages.
3. Select the connected CAN channels of the device(s) to be tested.
4. Set the appropriate baudrate depending on the transceiver being used (High-Speed max. 1,000,000 Bd, Low-Speed max. 125,000 Bd).
5. Click **[Start]**.

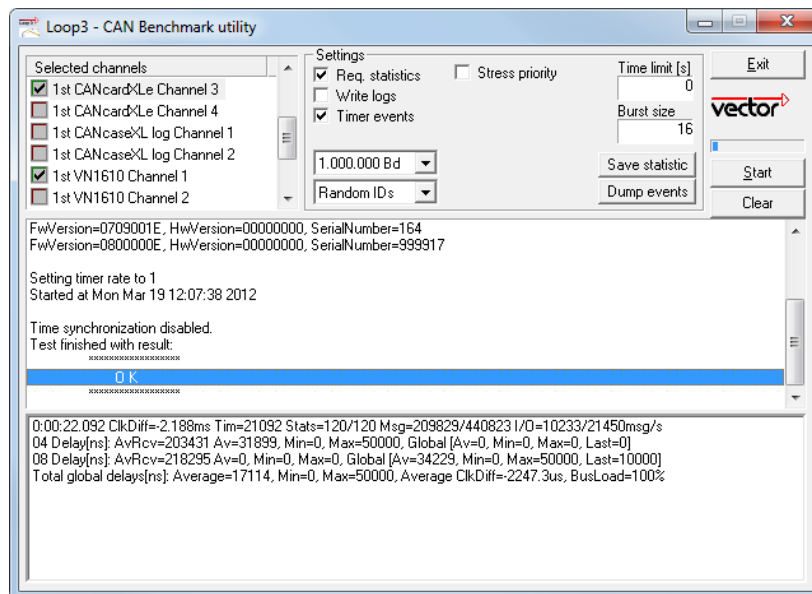


- You will see statistical data in the lower part of the window if the system has been configured properly.

Loop3 application



- The test procedure can be terminated with the **[Stop]** button. An **OK** should appear in the upper part of the window.



3.1.2 FlexRay

Device test

The operating test for FlexRay can be executed with the following devices:

- VN3300
- VN3600
- VN7600

FRLoop.exe

This operating test requires an inserted FRpiggy.



1. Remove the FlexRay cable if it is connected.
2. Start \Drivers\Common\FRLoop.exe from the driver CD.
3. Execute the test.
4. If no error messages occur, the operating test was successful.



3.1.3 MOST

Device test

The operating test for MOST can be executed with the following devices:

- VN2610
- VN2640

MLoop.exe

This functional test requires a MOST fiber optic cable and a fiber coupler for HFBR connectors.



1. VN2610
Start `\Drivers\Common\MLoop.exe` from the driver CD
- VN2640
Start `\Drivers\Common\M150Loop.exe` from the driver CD.
2. Select the VN2610/VN2640 to be tested from the list of detected devices.
3. Click **[Twinkle]** and check if the power LED of the VN2610/VN2640 is blinking at least for one second.
4. Connect the MOST fiber optic cable with the VN2610/VN2640 device, select **Master** mode and check if the program displays the status **Unlock**. Check if red light comes out of the Tx fiber of the MOST fiber optic cable.
5. Connect both ends of the fiber with one fiber coupler to a ring and check if the program displays the status **Lock**.
6. Close `MLoop.exe` with **[Exit]**.

4 Appendix A: Addresses

Vector Informatik GmbH

Vector Informatik GmbH
Ingersheimer Str. 24
70499 Stuttgart
Germany
Support: +49 711 80670-200
Phone: +49 711 80670-0
Fax: +49 711 80670-111
<mailto:info@de.vector.com>
<http://www.vector.com>

Vector CANtech, Inc.

Vector CANtech, Inc.
39500 Orchard Hill Place
Suite 550
Novi, Mi 48375
USA
Support: +1 248 449 9290 Option 2
Phone: +1 248 449 9290
Fax: +1 248 449 9704
<mailto:info@us.vector.com>
<http://www.vector.com>

Vector Automotive Technology (Shanghai) Co., Ltd.

Vector Automotive Technology (Shanghai) Co., Ltd.
Sunyoung Center
Room 1701, No.398 Jiangsu Road
Changning District
Shanghai 200050
China
Phone: +86 21 6432 53530
Fax: +86 21 6432 5308
<mailto:info@cn.vector.com>
<http://www.vector.com>

Vector France SAS

Vector France SAS
168, Boulevard Camélinat
92240 Malakoff
France
Support: +33 1 4231 4010
Phone: +33 1 4231 4000
Fax: +33 1 4231 4009
<mailto:information@fr.vector.com>
<http://www.vector.com>

Vector GB Ltd.	<p>Vector GB Ltd. Rhodium Central Boulevard Blythe Valley Park Solihull, Birmingham West Midlands B90 8AS United Kingdom</p> <p>Support: +44 121 50681-77 Phone: +44 121 50681-50</p> <p>mailto:info@uk.vector.com http://www.vector.com</p>
Vector Informatik India Pvt. Ltd.	<p>Vector Informatik India Pvt. Ltd. Lokesh Madan 4/1/1/1, Sutar Icon, Sus Road Pashan, Pune - 411 021 India</p> <p>Phone: +91 20 2587 2023 Fax: +91 20 2587 2025</p> <p>mailto:info@in.vector.com http://www.vector.com</p>
Vector Japan Co., Ltd.	<p>Vector Japan Co., Ltd. Seafort Square Center Bld. 18F, 2-3-12, Higashi-shinagawa, Shinagawa-ku Tokyo 140-0002 Japan</p> <p>Support: +81 3 5769 7800 Phone: +81 3 5769 7800 Fax: +81 3 5769 6975</p> <p>mailto:info@jp.vector.com http://www.vector.com</p>
Vector Korea IT Inc.	<p>Vector Korea IT Inc. #1406 Mario Tower 222-12 Guro-dong, Guro-gu Seoul, 152-848 Republic of Korea</p> <p>Support: : +82 2 807 0600 Ext.2 Phone: +82 2 807 0600 Fax: +82 2 8070601</p> <p>mailto:info@kr.vector.com http://www.vector.com</p>

VecScan AB

VecScan AB
Theres Svenssons Gata 9
417 55 Göteborg
Sweden

Support: +46 (31) 764 76-00

Phone: +46 (31) 76476-00

Fax: +46 (31) 76476-19

<mailto:info@se.vector.com>

<http://www.vector.com>

Get more Information!

Visit our Website for:

- > News
- > Products
- > Demo Software
- > Support
- > Training Classes
- > Addresses

www.vector.com