

Test Automation Editor 1.1

Convenient creation of CANoe test modules for ECU testing

Overview of Advantages

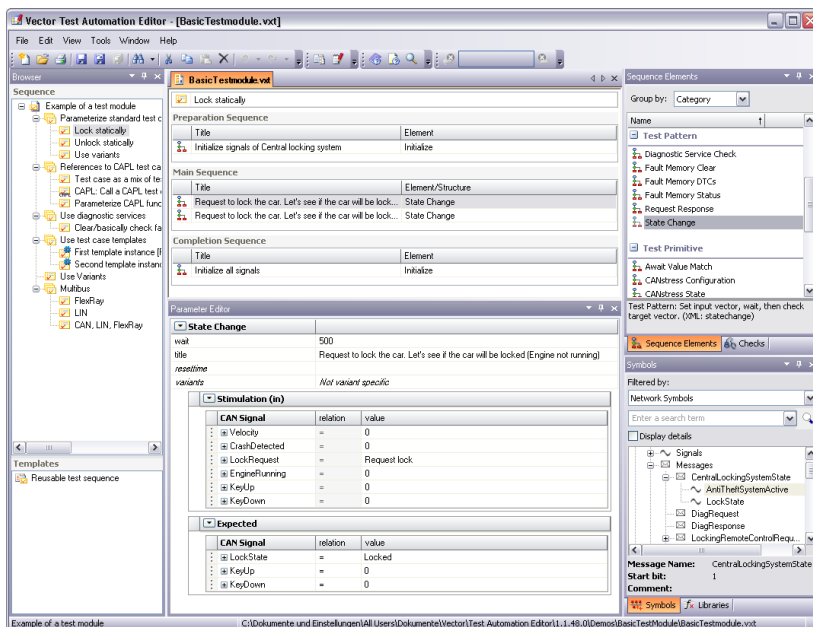
- > Just one tool to create and parameterize tests in all development phases of ECUs
- > Equally well-suited for ECU developers, test engineers and domain experts
- > CANoe Test Feature Set is easy to apply
- > Integration in CANoe: effectively and iteratively edit test modules in the Test Automation Editor and execute these modules in CANoe
- > Seamless integration of DOORS
- > Knowledge of XML is not required
- > Parameterize test patterns symbol-based from the integrated symbolic selection dialog

Application areas

Test sequences are created, maintained and executed during many development phases of individual ECUs and networked systems. Use of CANoe in these development phases ensures that the CANoe test modules are always available. It is very easy to create test sequences in XML test modules using the Test Automation Editor. These sequences consist of a structured sequence of test cases; they are created either by parameterizing prepared test patterns or by parameterizing references to dedicated test case libraries (CAPL or .NET). In addition, you can use CAPL libraries to create test functions that can be used like test patterns.

Functions

- > Create and edit test sequences
- > Define order of execution of test cases
- > Clearly organize test cases in test groups
- > Compose test cases by parameterizing predefined test patterns or your own test functions
- > Access to symbols for CAN (DBC), LIN (LDF) and FlexRay (FIBEX)
- > Access to symbols of diagnostic descriptions (CDD, ODX)
- > Parameterize test patterns symbolically, e.g. by drag & drop from the Symbol Explorer window
- > Integrate and parameterize test cases and functions from CAPL libraries
- > Quickly navigate in the CAPL libraries being used
- > Interface to DOORS: Generate test modules from DOORS, import CANoe test modules to DOORS and navigate directly in both directions
- > Print out a test list with the general comprehensibility of a test specification, which can be reviewed by test engineers as well as domain experts



Test Automation Editor:
Clear creation of test modules

Special Functions

- > Consistently create and maintain test module variants that can be selected in CANoe before execution
- > Create and maintain test case templates for frequently recurring test sequences of the same type
- > Apply and parameterize test case templates in clearly organized table-format

System requirements

Component	Recommended	Minimum
Processor	Pentium 4/2.6 GHz	Pentium III/1GHz
Memory (RAM)	512 MB	256 MB
Hard disk capacity		60 MB
Screen resolution	1280 × 1024	1024 × 768
Operating system	Windows 7 (32 Bit), Windows Vista (32 Bit), Windows XP SP2 or Windows 2000 SP4	
DOORS interface	8.1 (or higher)	7.1
CANoe	7.1 (or higher)	7.0
Internet Explorer		5.5

The Test Automation Editor is used together with CANoe. Please note the more stringent requirements for a CANoe installation (see CANoe datasheet).

Summary

The functions of the Test Automation Editor extend far beyond the editing capabilities of an XML editor. Simultaneously, the wide variety of functions available in CANoe test modules is offered. This focus gives you an easy-to-use and at the same time very powerful tool.

New Functions in Version 1.1

- > Symbolic selection dialog enables drag & drop of all visible elements
- > Context-sensitive online help; detailed description of available test features
- > Full DOORS integration
- > Use and parameterize CAPL test functions on the same level as test patterns
- > Extended options for parameterizing CAPL test functions and test cases
- > Greater flexibility of the graphic user interface
- > More flexible work with test case templates
- > Navigate directly in CAPL test case libraries